

Quick Start Guide

Van Veen Grab

This guide is meant to serve as a quick reference for operating the Van Veen Grab, for taking disturbed samples from the base of lakes, streams, rivers etc.

Step 1

At surface of sample site, open jaws of grab & secure with hook

Step 2

Deploy grab gently & steadily into water to ensure hook remains in position

Step 3

When the grab reaches the bottom, jaws will automatically open.

Step 4

Size of sample will depend on compactness of sediment & weight of grab (all Van Veen Grabs are weighted)

Step 5

We recommend you take a minimum of 6 samples to base your conclusions on the total of all the samples from an area

Step 6

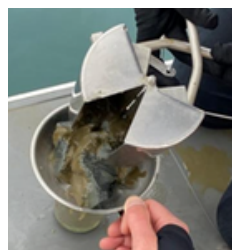
Raise the grab slowly

Step 7

On surface empty the grab to investigate contents

Step 8

Clean stainless steel grab



Scan to download
our video