



# Information: Dissolved Oxygen Testing Tip

## Dissolved Oxygen Testing Tip

When measuring dissolved oxygen using a membrane covered sensor in turbulent or aerated systems, you may occasionally experience erratic readings. If you've ever tried to take readings and noticed the DO values constantly moving you may be dealing with bubbles bursting on, or sticking to, the end of your sensor. Either scenario can affect the stability of your meter reading!

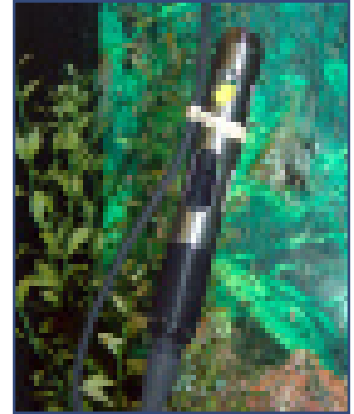
One way to deal with this is to simply point the probe/sensor upwards by loosely bending the cable and attaching the probe to the cable with a rubber band.

You should still move the cable to ensure sufficient flow but your readings should stabilise much more quickly.

### Calibrate, calibrate, calibrate

The most important thing that can be done to ensure accurate dissolved oxygen readings is to perform an accurate calibration. As a general rule, for high data quality an accurate calibration should be performed prior to data collection.

Van Walt recommends daily calibration of meters and probes.



DO probe inverted to prevent bubbles from affecting the reading.